

---

# **FourSevens add-in for ArcGIS Pro**

*Release v1.0.3*

**GeoGraph Technologies, LLC**

**Feb 07, 2020**



# CONTENTS

<b>1</b>	<b>Getting Started</b>	<b>1</b>
1.1	System Requirements . . . . .	1
1.2	Download and Install . . . . .	1
<b>2</b>	<b>User Guide</b>	<b>3</b>
2.1	Reports . . . . .	3
<b>3</b>	<b>Support</b>	<b>11</b>
3.1	Product Lifecycle . . . . .	11
3.2	Revision History . . . . .	11



## GETTING STARTED

### 1.1 System Requirements

ArcGIS Pro version 2.4+ and the .Net framework version 4.6.1+ are required and must be installed prior installing the FourSevens add-in.

If you do not have ArcGIS Pro, you can get it by contacting Esri at <https://www.esri.com/en-us/arcgis/products/arcgis-pro/overview>.

FourSevens add-in compatibility is as follows:

- Windows 8.1 or later
- Dual-core, Multi-threaded CPU Minimum (4 cores recommended, 10 cores optimal)
- 4 GB RAM Minimum (8 GB recommended, 16 GB optimal)
- 1024x768 Resolution
- 32 GB Disk Space Minimum (32 GB or more on a solid-state drive (SSD))
- 4 GB or more Dedicated Graphics Memory Recommended

The hardware and software requirements are the same as for ArcGIS Pro. These requirements along with further compatibility details can be found by visiting <https://pro.arcgis.com/en/pro-app/get-started/arcgis-pro-system-requirements.htm>.

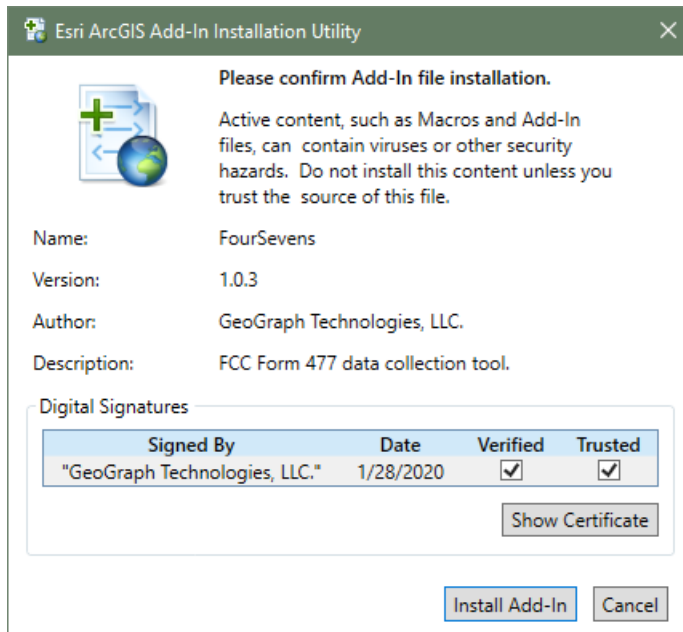
### 1.2 Download and Install

To download the FourSevens add-in for ArcGIS Pro, please visit <https://marketplace.arcgis.com> and login using your AGOL account. You can search using the app's name, or simply "GeoGraph".

Click the app listing to open the details page, and click "Get it now". You will be asked to agree to Esri and GeoGraph Terms and Conditions, and to provide some user information that will help us serve you better.

Once the add-in has been downloaded to your machine, you will need to run the .esriAddinX file. This will bring up the installer shown below.

Once the installation is completed, you will see it in the "GeoGraph/Telecom" ribbon tab in your ArcGIS Pro window the next time you open it.



## USER GUIDE

Use this guide to find helpful information on how to use the tools currently provided in the FourSevens add-in for ArcGIS Pro.

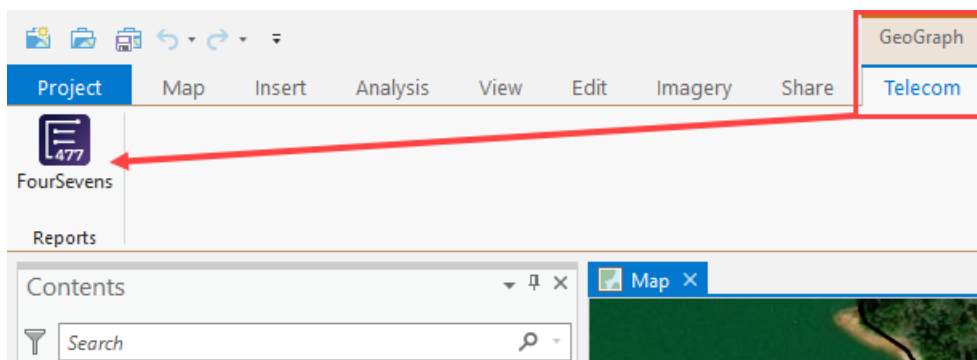
### 2.1 Reports

This section covers the reporting tools that we currently offer.

#### 2.1.1 FourSevens Tool

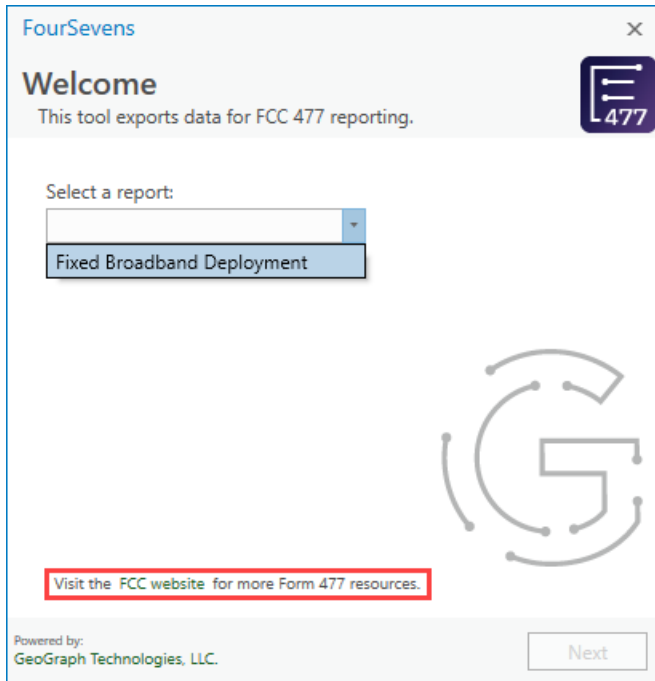
The FourSevens Tool makes it much easier for users to compile their fixed broadband deployment data into a correctly formatted, FCC-ready CSV report. The tool processes input data provided by the user and quickly outputs a csv file that would otherwise have to be manually created by the user.

The tool can be accessed by clicking on the **GeoGraph - Telecom** tab in ArcGIS Pro and selecting the **FourSevens** button in the **Reports** group as shown below.



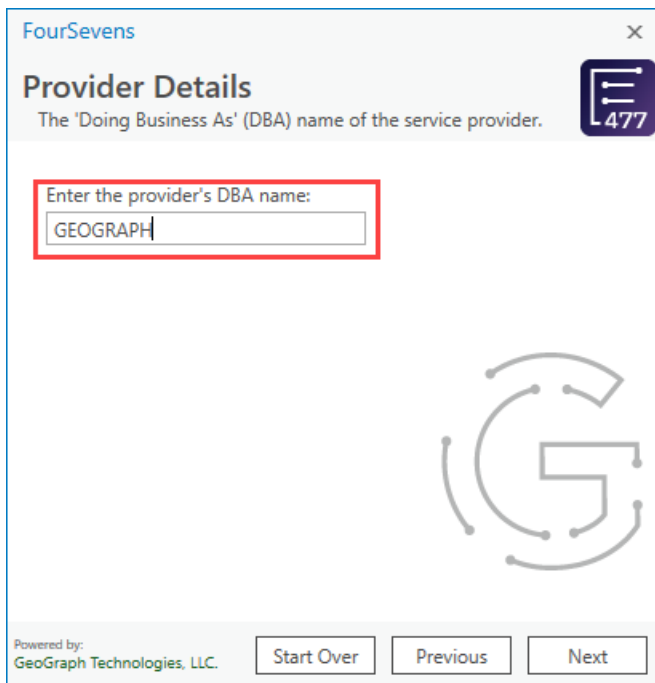
#### Welcome Page

The Welcome Page is the first page that comes up. This page is used to select the type of report to be run and begin the process. A link is also provided that navigates to the FCC 477 Reporting website where details on each of the report types can be reviewed before starting, as shown below.



### Provider Details Page

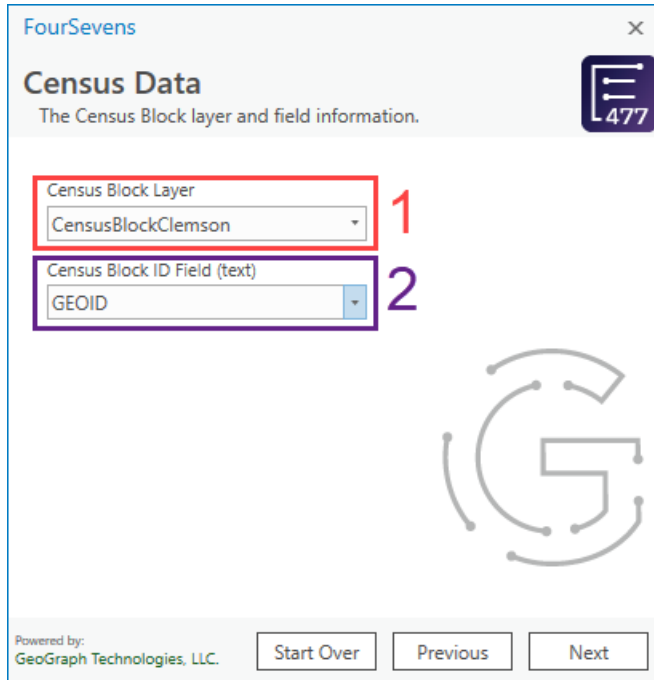
The Provider Details Page is the first Fixed Broadband Deployment (F.B.D.) page in the wizard. This page simple asks for the 'Doing Business As' (D.B.A.) name for the reporting service provider.





## Census Data Page

The Census Data Page is used to gather details about the Census Block layer in the map that contains the census data. That is, the user will select the relevant polygon feature layer from a list of all polygon feature layers that are in the map. Next, the user will select the field that contains the required Census Block ID from the selected feature layer.

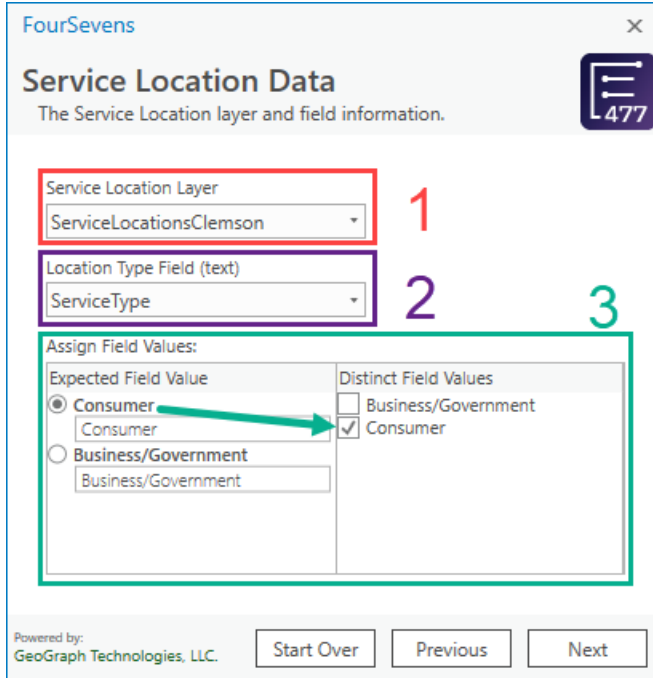


The screenshot shows the 'Census Data' configuration window in the FourSevens add-in. The window title is 'Census Data' with a subtitle 'The Census Block layer and field information.' and a close button. A blue icon with '477' is in the top right. Two dropdown menus are highlighted with red and purple boxes and numbered 1 and 2. The first dropdown, 'Census Block Layer', has 'CensusBlockClemson' selected. The second dropdown, 'Census Block ID Field (text)', has 'GEOID' selected. A large stylized 'G' logo is in the center. At the bottom, it says 'Powered by: GeoGraph Technologies, LLC.' and has 'Start Over', 'Previous', and 'Next' buttons.

1. Select the polygon feature layer that contains the census block information for the report being run.
2. Select the field that contains the ID of the census block.

## Service Location Data Page 1

The first Service Location Data Page requires the user to specify the point feature layer containing the service location data as well as some field values based on that selection.



1. Select the point feature layer that contains the service location information for the report being run.
2. Select the field that contains the service location type data.
3. Assign the unique values found in the data based on the selected service location type field to the values needed for the report by selecting an **Expected Field Value** followed by any **Distinct Field Value** that is applicable. (i.e. if the report is looking for 'Consumer' and the data has 'con', then 'con' must be assigned to 'Consumer')

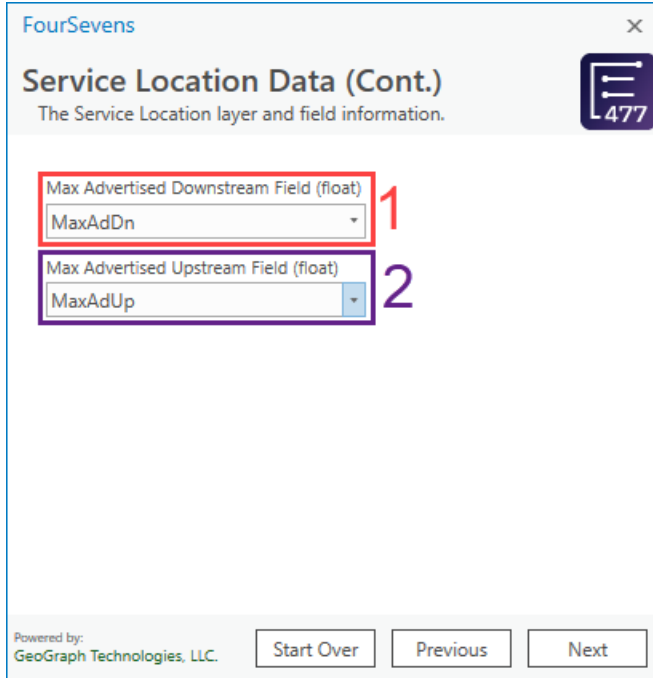
## Service Location Data Page 2

The second Service Location Data Page requires the user to select the field containing the technology type data.

1. Select the field that contains the technology type data.
2. Assign the unique values found in the data based on the selected technology field to the values needed for the report. (i.e. if the report is looking for 'Optical Carrier/Fiber' and the data has 'fiber', then 'fiber' must be assigned to 'Optical Carrier/Fiber') This assignment works the same way as the Location Type assignment on the previous page.

### Service Location Data Page 3

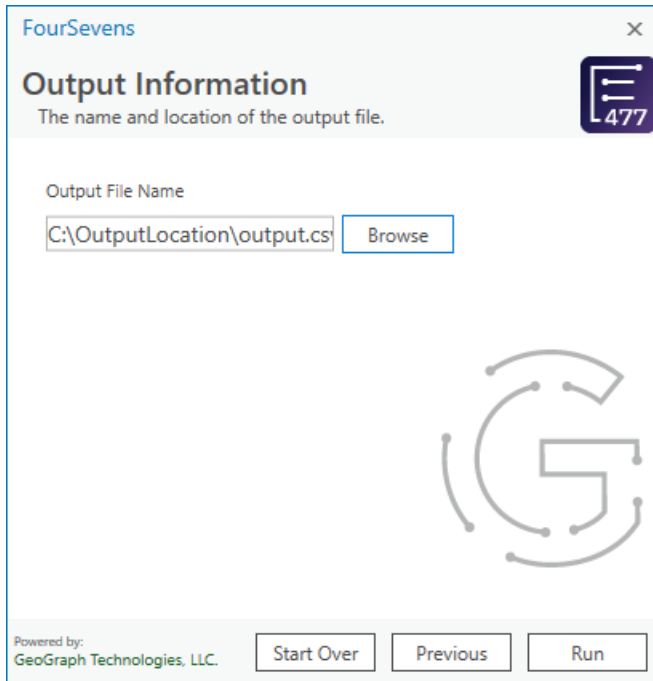
The last Service Location Data Page requires the user to select the fields containing the various bandwidth values to be reported on.



1. Select the field that contains the maximum advertised downstream bandwidth data.
2. Select the field that contains the maximum advertised upstream bandwidth data.

### Output Information Page

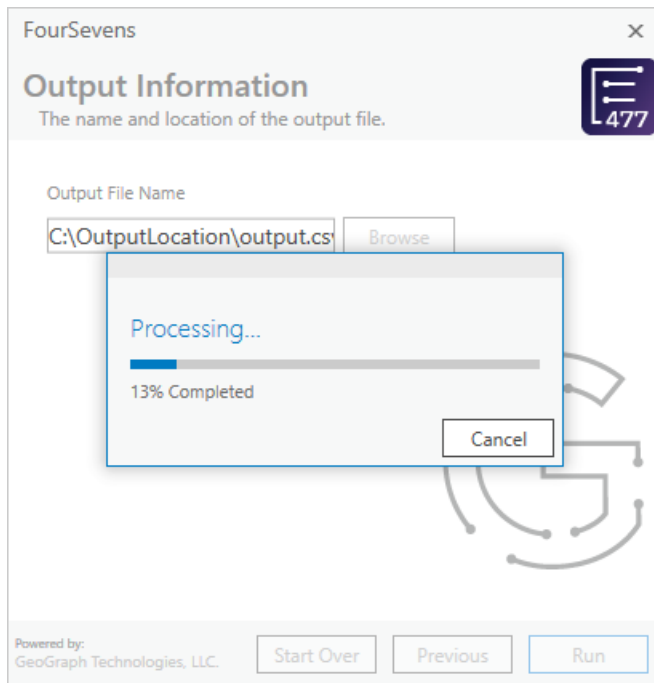
The Output Information Page allows the user to specify the file name and folder path location to store the output from the tool.



## Output Information Page (Processing)

Once the user has selected an output file path and file name, the 'Run' button becomes enabled and the tool is ready to go. When 'Run' is clicked, a progress window will appear while the tool is running to provide information about the progress. Once completed, a prompt will appear indicating the chosen file path and file name for the output to confirm the tool has finished. From here, the user may go back and change values previously selected to run the tool again, or select 'Start Over' to reset the wizard.

**Note:** The process can be cancelled at any time, but the selected output file will already contain the data processed prior to cancellation.





To get help or more information about this product, please visit <https://geograph.tech/support>.

## 3.1 Product Lifecycle

Version	Release Date	Software Support	Technical Support	Retired
1.0.3	1/2020	1/2020 - 1/2021	1/2021 - 7/2022	8/2022
1.0.2	10/2019	10/2019 - 1/2021	1/2021 - 7/2022	8/2022
1.0.1	8/2019	8/2019 - 1/2021	1/2021 - 7/2022	8/2022
1.0.0	7/2019	7/2019 - 1/2021	1/2021 - 7/2022	8/2022

## 3.2 Revision History

Below is the revision history for the FourSevens add-in for ArcGIS Pro.

### 3.2.1 *Incremental Update: (v1.0.3)*

- Updated the tool to remove the maximum contractual upstream and downstream values to account for new changes by the FCC on report requirements.
- Updated images/icons for the tool to match new GEOGRAPH branding.
- Changed the name of the tool from “GeoGraph Telecom add-in for ArcGIS Pro” to “FourSevens”.
- Restored target .Net framework to v4.6.1 to match ArcGIS Pro 2.4 requirements.

### 3.2.2 *Incremental Update: (v1.0.2)*

- Updated target .Net framework to v4.7.2 to be compliant with latest security protocols.
- Updated add-in name and general branding information.

### 3.2.3 *Incremental Update: (v1.0.1)*

- Updated interface to have better compatibility with ArcGIS Pro’s Light and Dark themes.

### **3.2.4 Initial Release: (v1.0.0)**

- Implemented initial FCC Qualification Wizard reporting tool to allow users to export CSV data for Fixed Broad-band Deployment Reports with the ability to provide less 'clean' data as input to the tool and map those values to the input values required by the report.